



GEOHAB 2022

Geological & Biological Habitat Mapping - Venice, Italy



16-20 May 2022

Venice, Italy

Institute of Marine Sciences (CNR ISMAR)

GEOHAB (Marine Geological and Biological Habitat Mapping)

GEOHAB is an international association of marine scientists studying and mapping geophysical, biophysical, and geomorphic indicators of benthic communities, species diversity and distribution. The GEOHAB 2022 annual conference will be held for the first time in Venice, Italy at Venice International University, San Servolo Island in May from Monday **May 16 to Friday May 20**. This annual conference brings together over 150 biologists, geologists, environmental scientists, spatial analysts, technologists, geophysicists and environmental advisors from around the world and provides a unique multidisciplinary forum for the exchange of knowledge and ideas that underpin sustainable ocean management. Students are encouraged to attend and grants are available. GEOHAB is presently in its 20th year and has many publications.

GEOHAB Conference

The conference will facilitate an exhibition of **industry technologies and products** of interest to the marine environmental community. Because of the relatively small number of delegates and focused topics, GeoHab conferences are organized as informal, single-stream sessions, which encourages dialogue between delegates and exhibitors.

GEOHAB Sponsorship

GEOHAB 2022 offers **unique sponsorship opportunities** that can be tailored for you. If you would like to discuss a package best suited to your requirements, or trade/exhibition booth, please contact any of the co-conveners of GeoHab 2020. Your input is welcomed and will ensure the ongoing success of this international forum. Funds obtained from sponsorships are also used to support students wishing to attend the conference.

Location



The historical city of Venice in the northeastern part of Italy is built on a group of 118 small islands that are separated by canals and linked by over 400 bridges within the Venice Lagoon and together are a UNESCO World Cultural and Natural Heritage site. It is one of the major turistic destination in the world. Few cities can claim such a priceless art and history heritage as Venice. This unique city with its magical, spectacular scenery is not just beautiful, it is a real miracle of creative genius: a city built on mud, sand and the slime of a difficult, inhospitable landscape.

Conference Venue

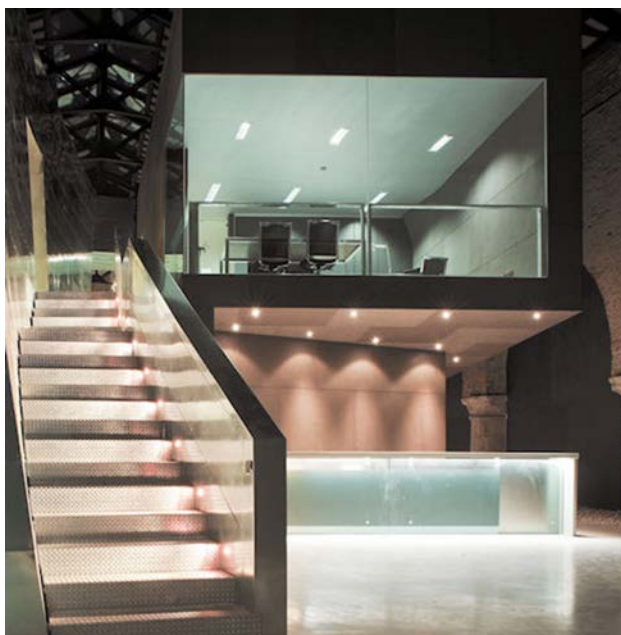


Venice International University is something unique in the academic world – a consortium of 18 universities from all over the world with an autonomous campus on the island of **San Servolo Island, Venice, Italy**.

The **island of San Servolo** is located in the Venetian lagoon, between Venice city centre and the Lido Island. It takes 10 minutes by boat to reach Piazza San Marco, the heart of Venice.

The island was originally the home of the Venetian Calbana family who, beginning in 810, hosted the seat of a Benedictine Monastery. The buildings of the island have been developed and changed over the ages along with the people who inhabited it. San Servolo remained a monastery until the mid-eighteenth century when it was transformed into a Hospital. The island overlooks the peaceful waters of the lagoon, and covers an area of over sixteen thousand square meters that were once used for vineyards and gardens.

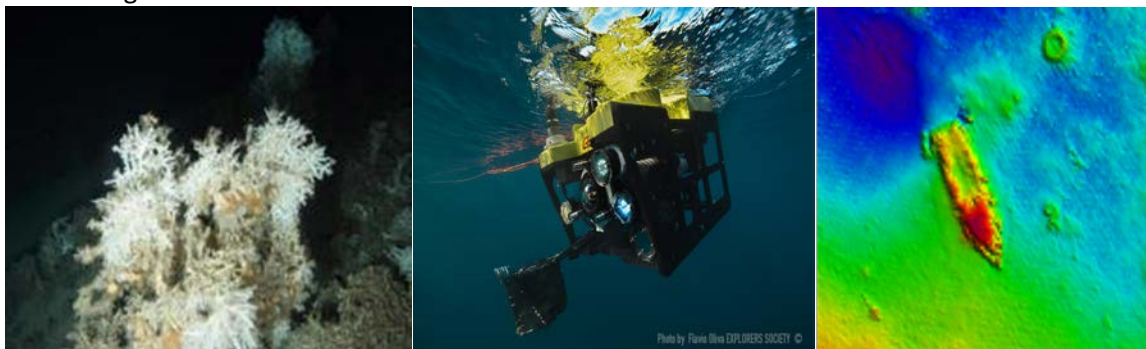
Conference HOST



The **CNR-ISMAR Institute** is distributed in 6 regions of Italy (Veneto, Friuli-Venezia Giulia, Emilia Romagna, Liguria, Lazio, Campania) involving more than 200 people in research activities. CNR-ISMAR has a long and documented experience in seafloor mapping and Mediterranean deep-sea ecosystems studies with special focus on the highly emblematic cold-water coral, chemosynthetic community habitats, and very shallow water coastal and transitional environments, such as lagoons and deltas.

Preliminary Session topics

1. **Shelf and deep-sea habitats:** This session will focus on deep-water methods, technological advances, and discussion of specific shelf and deep-sea habitats, as well as how their distribution and specific characteristics may play an important role at broader scales. Talks may include habitat mapping on the shelf and in the deep-sea for conservation and management purposes.
2. **Coastal and shallow water habitats:** This session will have a particular focus on linking methodologies from terrestrial remote sensing (including data collection by aerial drones) to shallow water environments. Talks may include habitat mapping in coastal and shallow water habitats for conservation and management purposes.
3. **New approaches from coast to deep water habitat mapping:** This session will emphasize new technologies and approaches to tackle habitat mapping independently of operational spatial scale. Talks may include experiments, projects and practical experience enable to disclose dissimilarities in the mapping approach, explore operational and technological potentialities, recognize pitfalls, thus paving the road to find consensus solutions and prepare uniform guidelines from coast to deep sea.
4. **The Anthropocene and the effect of human footprint on marine habitats:** This session will focus on recent approaches and technological development to map the human footprint in the Anthropocene, including benthic marine litter. Talks may include approaches to evaluate the submerged human pressures and impacts, as well as estimating long-lasting consequences on sea-floor morphology and habitat properties.
5. **Role of oceanography in habitat mapping:** This session will attempt to bring together the fields of oceanographic modelling and habitat mapping, by considering the role of water masses in shaping species and habitat spatial patterns.
6. **Habitat mapping and climate change:** This session will focus on the role of habitat mapping in assessing the marine ecosystem responses to global warming and ocean acidification. Talks may include future climate scenarios highlighting how changes of benthic habitat ecosystem can be assessed through predictive models of ecosystem shifts and how potential habitat loss might influence future predictive scenarios.
7. **Habitat mapping for maritime spatial planning (MSP) within an ecosystem based approach:** This session will focus on studies related to an ecosystem-based approach applied to a MSP aimed at maintaining the ecosystem integrity and ensuring the sustainable use of its goods and services.
8. **Submerged landscapes and cultural heritage:** This session will focus on studies related to submerged landscapes and underwater cultural heritage. Underwater cultural heritage holds not only information about the history of humankind and the social importance of the oceans but also about the history of climate change and its impact on humanity. This session will also focus on the technical approaches employed to discover and monitor the submerged landscapes and archaeological sites.



Important Dates



January: Second Circular

January 20th: Submission of abstract opens

March 20th: Submission of abstract closes

April 20st: Early bird registration closes

May 16th: Workshop and Icebreaker party

May 17th: Conference oral and poster session

May 18th: Conference oral and poster session
and conference dinner

May 19st: Conference oral and poster session

May 20nd: Field tri

Registration fee

Further information will be available in the near future on the GEOHAB 2022 website and in the Second Circular.

ACCOMODATION

Delegates are generally responsible for making their own lodging reservation. We have pre-booked about 30 rooms in San Servolo within the conference centre till 18th February. Find attached the booking form and please **make your reservation as soon as possible**.

Below are listed other possible alternatives for economical accommodation:

<https://thisiscombo.com/it/location/venezia/>

<https://www.ostellosantafosca.it/it/>

https://staygenerator.com/destinations/venice?utm_source=google-my-business&utm_medium=organic&utm_campaign=hostel-Venice&lang=it-IT

<http://www.collegiogesuiti.com/Contatti/index.html>

<http://www.salesianivenezia.it/>

MAKE YOUR RESERVATION AS SOON AS POSSIBLE, VENICE IS A DIFFICIL PLACE TO FIND ACCOMODATIONS, ESPECIALLY DURING THE GEOHAB WEEK.

Workhops

Information will be available in the near future in the Geohab 2022 website and in the second circular.

Anti-Covid 19 / Green Pass Measures

In collaboration with the competent authorities, the GEOHAB 2022 local organizing committee has developed the **Anti-Covid 19 / Green Pass measures** summarised below, which will be implemented for the **GEOHAB 2022 Conference**, with the purpose of guaranteeing the safety of all participants.

To have access to the Conference premises at the San Servolo Island, participants must have and show to anyone responsible for verification, a **Green Pass** or equivalent certification, as proof of one of the following cases: complete vaccination with vaccines approved by the EMA (Moderna, Pfizer, AstraZeneca, Johnson&Johnson), administration of the first dose which will be valid starting on the fifteenth day after the dose and until the administration of the second dose (in the case of vaccines requiring two doses), a certificate of complete recovery from Covid-19, or a negative result from a PCR or rapid antigen test taken within 48 hours before the visit.

During the process to verify the Green Pass, conference participants will be asked to show a valid document of identity. If the above conditions are not met, the GEOHAB 2022 Local Organizing Committee will refuse admission to the GEOHAB 2022 Conference and no refunds of the registration fees will be allowed.

All conference participants are asked to please carry with them at all times a copy of their Green Pass or equivalent certification.

Field trip

Information will be available in the near future in the GEOHAB2022 website and in the second circular in the near future.

International scientific committee

- Vaughn Barrie (Geological Survey of Canada, Pacific)
- Craig Brown (Nova Scotia Community College, Canada)
- Guy Cochrane (U.S. Geological Survey)
- Margaret Dolan (Geological Survey of Norway, Norway)
- Andrea Fiorentino (Geological Survey of Italy-ISPRA, Italy)
- Gary Greene (Moss Landing Marine Laboratories, USA)
- Daniel Ierodiaconou (Deakin University, Australia)
- Aarno Kotilainen (Geological Survey of Finland, Finland)
- Geoffroy Lamarche (NIWA, University of Auckland, New Zealand)
- Tim Le Bas (National Oceanography Centre, UK)
- Kim Picard (GeoScience Australia)
- Daria Ryabchuk (Karpinsky Russian Geological Research Institute, Russia)
- Donna Schroeder (U.S. Bureau of Ocean Energy Management)
- Heather Stewart (British Geological Survey, UK)
- Brian Todd (Geological Survey of Canada, Atlantic)
- Federica Foglini (CNR- Institute of Marine Sciences, Italy)
- Fantina Madricardo (Institute of Marine Sciences, Italy)

Local Organizing committee

- Federica Foglini (CNR-Institute of Marine Sciences, Italy)
- Fantina Madricardo (CNR-Institute of Marine Sciences, Italy)
- Irene Guarnieri (CNR-Institute of Marine Sciences, Italy)
- Michol Ghezzi (CNR-Institute of Marine Sciences, Italy)
- Marco Sigovini (CNR-Institute of Marine Sciences, Italy)
- Lorenzo Angeletti (CNR-Institute of Marine Sciences, Italy)
- Mariacristina Prampolini (CNR-Institute of Marine Sciences, Italy)
- Valentina Grande (CNR-Institute of Marine Sciences, Italy)
- Alessandra Mercorella (CNR-Institute of Marine Sciences, Italy)
- Daphnie Galvez (CNR-Institute of Marine Sciences, Italy)
- Giorgio Castellan (CNR-Institute of Marine Sciences, Italy)

Contacts:

federica.foglini@ismar.cnr.it +39 0516398872

fantina.madricardo@ismar.cnr.it: +39 0412407986