



GEOHAB 2018 Marine Geological & Biological Habitat Mapping

GEOHAB 2018 / 1ST CIRCULAR

SANTA BARBARA, CALIFORNIA



GEOHAB (Marine Geological and Biological Habitat Mapping) is an international association of marine scientists studying and mapping biophysical indicators of benthic communities, species diversity and distribution.

The GEOHAB 2018 annual conference will be held in Santa Barbara, California at the Fess Parker Resort from Monday, May 7 to Friday, May 11 2018.

This annual conference brings together approximately 150 biologists, geologists, environmental scientists, spatial analysts, technologists, acousticians and environmental advisors from around the world and provides a unique multidisciplinary forum for the exchange of knowledge and ideas that underpin sustainable ocean management. Students are encouraged to attend and grants are available.

GEOHAB is now in its 16th year and has several publications.

Conference

The conference houses an exhibition of industry technology and products used in the marine environmental community. Because of the relatively small number of delegates and focused topics, GEOHAB conferences are organized as an informal, single-stream session, which encourages dialogue between delegates and exhibitors.

GEOHAB Sponsorship

GEOHAB 2018 offers unique sponsorship opportunities that can be tailored for you. If you would like to discuss a package best suited to your requirements, or trade/exhibition booth, please visit our [sponsorship webpage](#) or email info@GEOHAB2018.org. Your input is welcomed and will ensure the ongoing success of this international forum. Funds obtained from sponsorships are also used to support students wishing to attend the GEOHAB conference.



Venue

The 2018 GEOHAB conference will take place in Santa Barbara, California at the Fess Parker Hilton. The modern building is located on the shore, and is just a 15 minute walk from downtown Santa Barbara.

Location

With a population of approximately 100,000 residents, Santa Barbara is a relatively small city situated on a south facing coastline sheltered by the Santa Ynez Mountains. Santa Barbara is a popular tourist destination with a Mediterranean climate. From LAX you can reach Santa Barbara by air, bus, train or 3 hour drive on Highway 101.

Themes

Shelf and deep-sea habitats:

This session will include deep-water methods, technological advances and discussion of specific shelf and deep-sea habitats as well as how their distribution and specific characteristics may play an important role at a broader scale. Talks may include habitat mapping in shelf and deep-sea habitats for conservation and management purposes.

Coastal and shallow-water habitats:

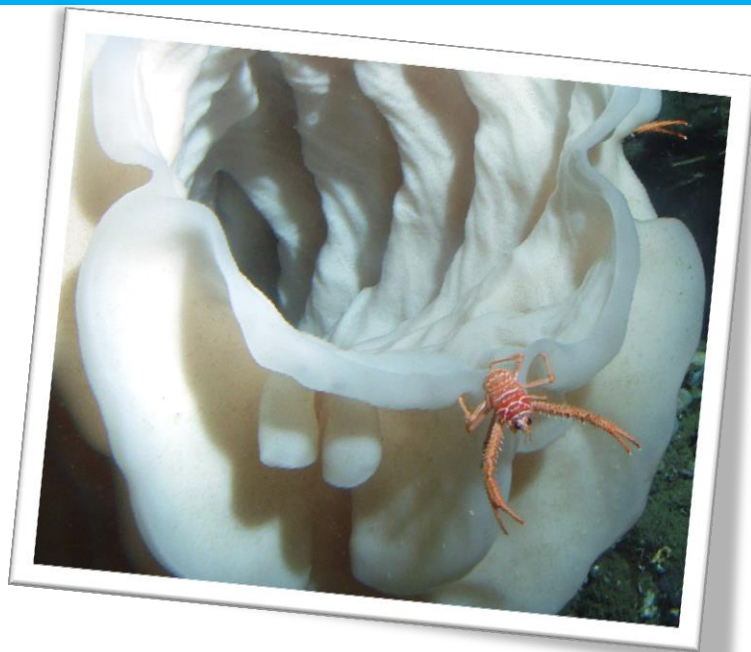
This session will explore applications in ecosystem-based and integrated ocean management, marine reserve design and performance, risk assessment, fisheries and other aspects of marine spatial planning. Any presentations relevant to this environment are welcome.

Mapping, planning and impact

assessment for ocean energy: This session will focus on the use of seafloor mapping technologies and case studies associated with marine renewable and conventional energy..

Marine minerals:

This session will focus on habitat issues related to marine minerals development including aggregates and deep sea minerals (e.g. seafloor massive sulfides, polymetallic nodules).



Deep water coral habitats: This session will feature presentations about coral habitat discovery, significance and management.

Seeps and Hydrates:

Talks in this session will address mapping and understanding seeps, gas hydrates and the chemosynthetic

ecosystems fueled by release of methane at the seafloor.

Interactions between oceanographic processes and habitats:

This highly interdisciplinary session will include talks that focus on geologic-habitat and biotic-habitat change and presence-absence as a function of bathymetric position, currents, waves and water chemistry.

Workshop

The workshop for GEOHAB 2018 will be held Monday, May 7, 2018.

Further details will be available in the 2nd circular, to be released in December 2017.



Field Trip

The field trip will be held Friday, May 11th 2018, We will take a boat excursion to Santa Cruz Island, one of the northern California Channel Islands. These islands are part of a National Park and the offshore area is both a National Marine Sanctuary and a National Park, where large sections are set aside as California State Marine Protected areas. This area contains a wealth of extraordinary natural and cultural resources (www.channelislands.noaa.gov, www.nps.gov/chis/index.htm).

The Itinerary for the Day

8:00 a.m.	Departure by bus from Fess Parker Resort
9:00 a.m.	Arrival in Ventura
9:30 a.m. to 10:00 a.m.	Coffee and snacks while boarding
10:00 a.m. to 11:30 a.m.	Boat Tour with possible whale watching and observing geology
11:30 a.m. to 1:00 p.m.	Lunch at Scorpion Cove, Santa Cruz Island
1:00 p.m. to 3:00 p.m.	Guided geology walking tour of Santa Cruz Island
3:00 p.m. to 4:00 p.m.	Boat return trip with drinks and snacks
4:00 p.m. to 5:00 p.m.	Bus return trip to Santa Barbara Fess Parker Resort



Important Dates

2017

December: 2nd Circular

2018

January 1: Abstract Submission - OPENS

March 1: Abstract Submission - CLOSES

March 15: Authors notified of abstract acceptance and decision, registration opens

April 3: Early Bird registration closes

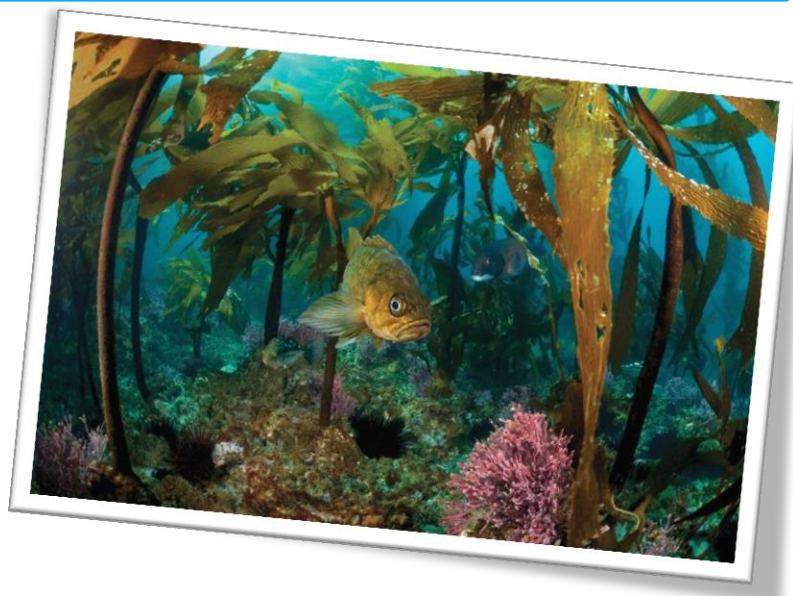
May 7: Workshop and Ice-breaker Reception

May 8: Conference Oral and Poster presentations and Poster Reception

May 9: Conference Oral and Poster presentations and Conference Dinner

May 10: Conference Oral and Poster presentations

May 11: Field Trip



Registration Fee

Information will be made available in the near future on the GEOHAB 2018 website and will be provided in the 2nd circular

Accommodation

Delegates are encouraged to reserve rooms using the GEOHAB 2018 reservation process. The organizing committee has held rooms for GEOHAB 2018 conference attendees at the Fess Parker Resort at a greatly reduced rate. Details will be available on the GEOHAB 2018 website when registration opens.



Student Support

Each year the organizing committee of the GEOHAB conference awards a small number of travel grants to selected students to attend and present at the conference. The Ron McDowell Bursary scheme is available to PhD, MSc and BSc students and will comprise an amount towards costs of travel, accommodation plus a waiver of the conference and workshop fees. See GEOHAB 2018 website for further details.

International Scientific Committee

Guy Cochrane 2018 Co-Chair [U.S. Geological Survey, USA]
Donna Schroeder 2018 Co-Chair [U.S. Bureau of Ocean Energy Management, USA]
Craig Brown [Nova Scotia Community College, Canada]
Brian Todd [Geological Survey of Canada, Canada]
Tim Le Bas [National Oceanography Centre, UK]
Gary Greene [Moss Landing Marine Laboratories, USA]
Daniel Ierodiaconou [Deakin University, Australia]
Aarno Kotilainen [Geological Survey of Finland, Finland]
Andrea Fiorentino [Geological Survey of Italy-ISPRA, Italy]
Margaret Dolan [Geological Survey of Norway, Norway]
Heather Stewart [British Geological Survey, UK]
Daria Ryabchuk [Karpinsky Russian Geological Research Institute, Russia]
Geoffroy Lamarche [NIWA, University of Auckland, New Zealand]
Kim Picard [GeoScience Australia, Australia]

Co-Conveners

Guy Cochrane 2018 Co-Chair [U.S. Geological Survey, USA]

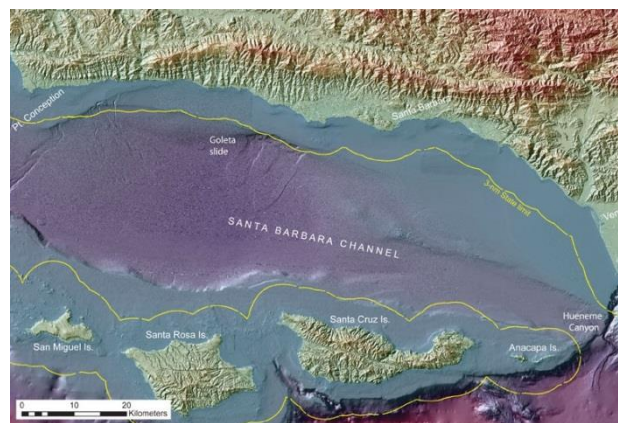
Donna Schroeder 2018 Co-Chair [U.S. Bureau of Ocean Energy Management, USA]

Local Organizing Committee

Guy Cochrane 2018 Co-Chair [U.S. Geological Survey, USA]

Donna Schroeder 2018 Co-Chair [U.S. Bureau of Ocean Energy Management, USA]

Chris Caldwell [Channel Islands National Marine Sanctuary, USA]



Sponsors

Its not to late to join in as a sponsor ([GEOHAB sponsorship PDF](#)).

