



# **GEOHAB**

**Marine Geological and Biological  
Habitat Mapping**

**Marine Environment Mapping and Interpretation –  
from the Coast to the Deep Ocean.**

**First Circular**



**2<sup>nd</sup> to 6<sup>th</sup> May 2016**

**WINCHESTER, UNITED KINGDOM**

---



**GEOHAB** (Marine Geological and Biological Habitat Mapping) is an international association of marine scientists studying and mapping biophysical (i.e. geologic and oceanographic) indicators of benthic communities, species diversity and distribution.

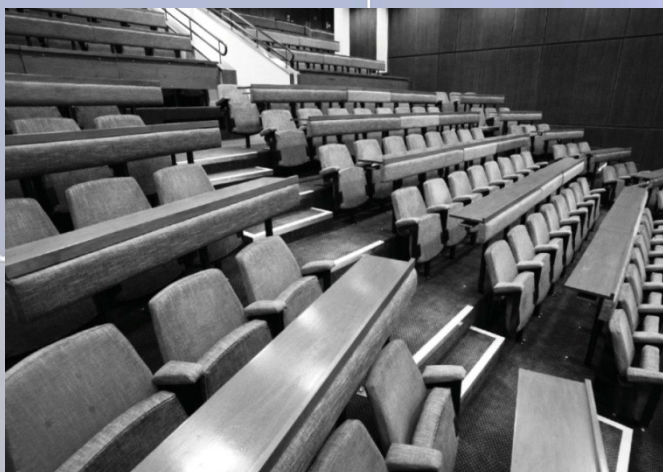
The GeoHab 2016 conference will be held in Winchester, England, the ancient capital of Wessex, from Monday 2<sup>nd</sup> to Friday 6<sup>th</sup> May 2016.

This annual conference brings together over 120 biologists, geologists, environmental scientists, spatial analysts, technologists, acousticians and environmental advisors from around the world and provides a unique multidisciplinary forum for the exchange of knowledge and ideas that underpin sustain-able ocean management. The conference also houses an exhibition of industry technology and products used in the marine environmental community. Because of the relatively small number of delegates and focused topics, GeoHab conferences are organised as an informal, single-stream session, which encourages dialogue between delegates and exhibitors.

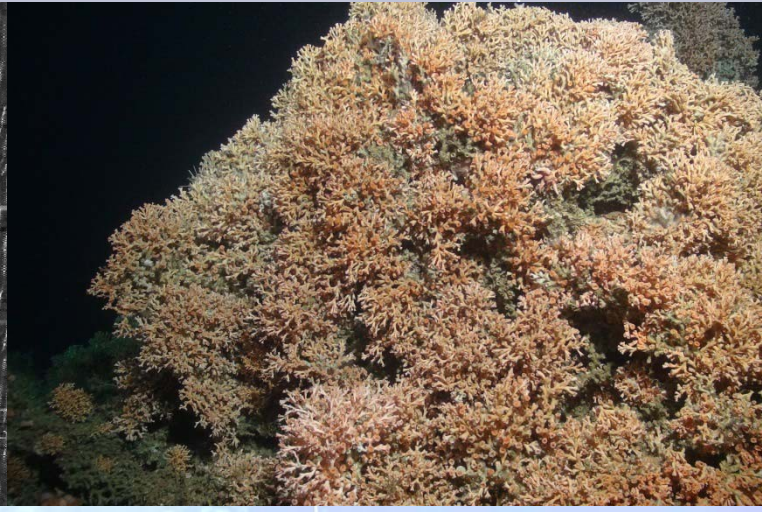
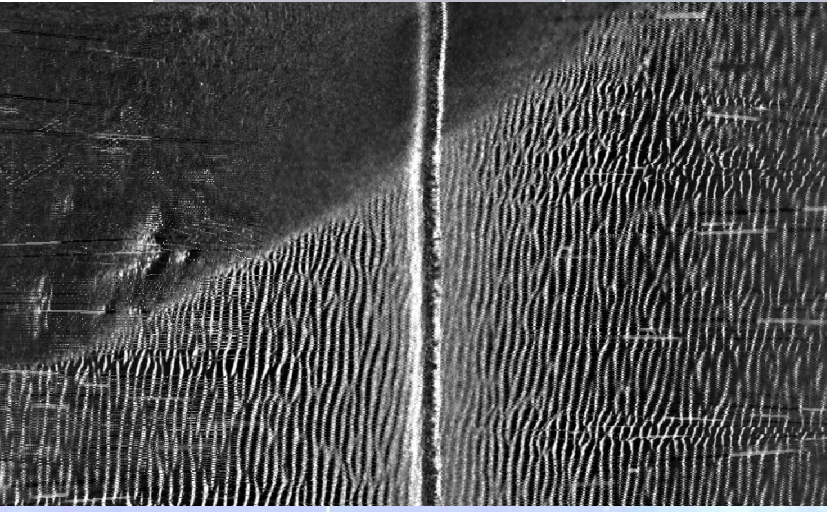
Students are encouraged to attend and grants are available. GeoHab is now in its 15<sup>th</sup> year and has several publications



**VENUE** The 2016 GeoHab conference will take place in the Winchester Guildhall and will be hosted by the National Oceanography Centre, Southampton and the Marine Environmental Mapping Programme MAREMAP.



**LOCATION** Winchester is 60 miles south west of London and has good road and rail connections. The conference venue is in the centre of Winchester. The city is relatively small and walking is recommended as parking is very limited. Much of the present form of the city dates to the late 9<sup>th</sup> century when King Alfred the Great held court. The city has many historic locations, not least Winchester Cathedral founded in 642 but rebuilt in 1079.

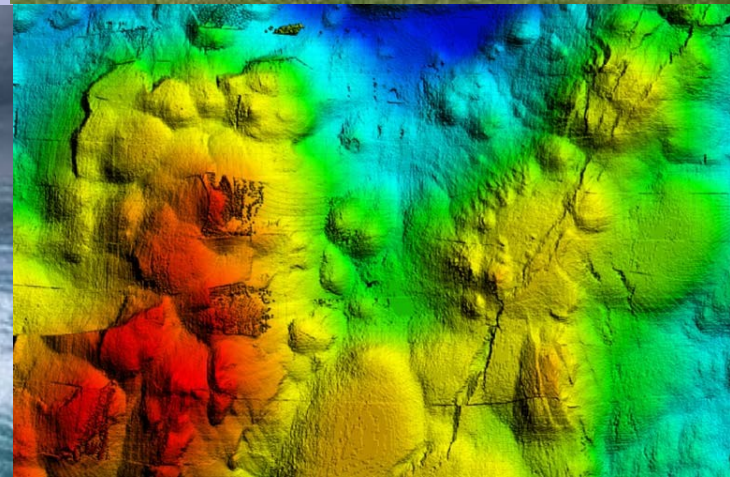


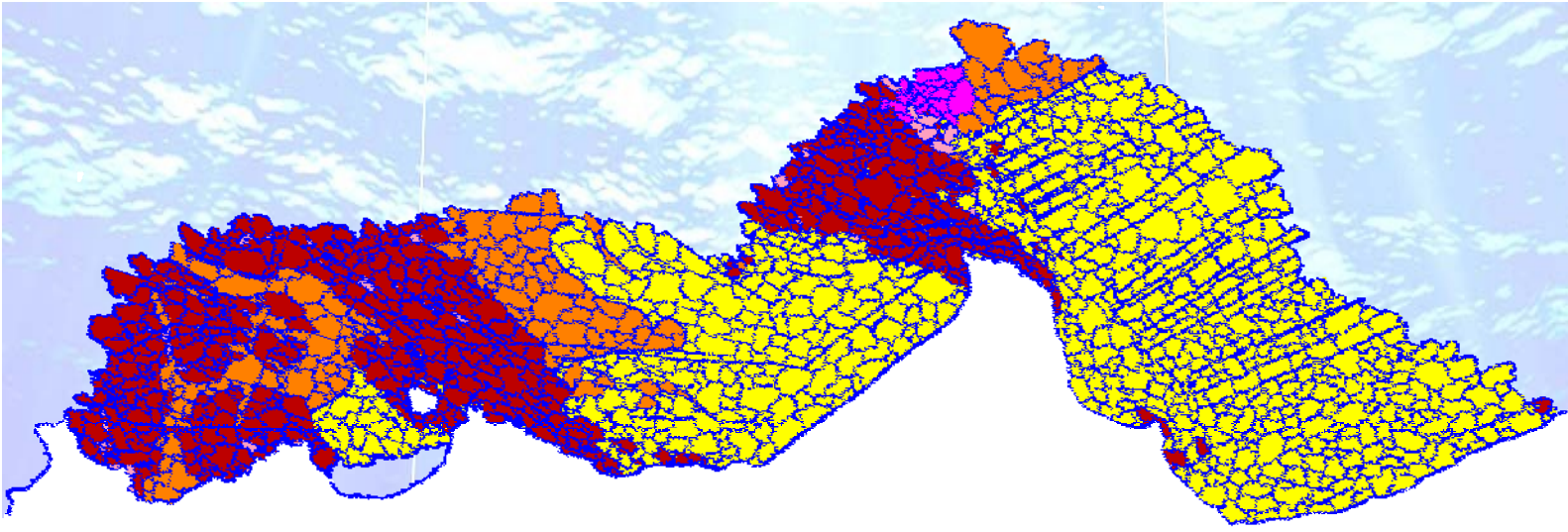
## THEMES

- **Development of Standards for Classification, Confidence and Assessment of habitat maps**
- **National Mapping program management and data-sharing**
- **Technological advances in habitat mapping**
- **Shelf and Deep-Sea habitats**
- **Coastal and Shallow Water habitats.**
- **Anthropogenic and Natural disturbance effects on marine habitats**
- **Role of Oceanography in Habitat Mapping**

**WORKSHOP** The workshop for 2016 will be held on the 2<sup>nd</sup> May and is titled: "Interpretation of Marine Environments using Object Based Image Analysis (OBIA)". Further details will be available in the second circular on 1<sup>st</sup> December 2015.

**FIELDTRIP** The fieldtrip will be held on Friday 6th May and we will visit one of the wonders of the world , the neolithic monument of Stonehenge. After this we move onwards to the Jurassic Coast (a World Heritage site) to view Lulworth Cove, Stair Hole and the Petrified Forest. Lastly we will travel through the New Forest, which has been the royal hunting ground for over 900 years, and home to the famous New Forest ponies.





## IMPORTANT DATES

2015

- December 1<sup>st</sup>:** Second Circular  
**December 7<sup>th</sup>:** Submission of Abstracts OPEN

2016

- January 31<sup>st</sup>:** Abstract submission CLOSES  
**February 19<sup>th</sup>:** Authors notified of abstract acceptance and decision  
**February 19<sup>th</sup>:** Registration opens for All Authors  
**March 14<sup>th</sup>:** Open Registration – first-come first-served basis.  
**May 2<sup>nd</sup>:** OBIA workshop and Ice-breaker Reception.  
**May 3<sup>rd</sup>:** Conference Oral and Poster presentations.  
**May 4<sup>th</sup>:** Conference Oral and Poster presentations and Conference Dinner.  
**May 5<sup>th</sup>:** Conference Oral and Poster presentations.  
**May 6<sup>th</sup>:** Fieldtrip.

**REGISTRATION** It is envisaged that registration may have to be limited due to conference hall size. All authors (for both oral and poster presentations) will be allowed early registration (starting 19<sup>th</sup> February) before general registration is opened. Fee information will be made available in the near future on the GeoHab 2016 website and provided in the second circular.

**ACCOMMODATION** Delegates are responsible for making their own reservations. Winchester has several large hotels and many guest houses. The organizing committee has negotiated discount rates for some of the larger hotels and details will be on the website in 2016. Hotels in Southampton or Basingstoke are within a short train journey.



**STUDENT SUPPORT** Each year the organizing committee of the GeoHab conference awards a small number of travel grants to selected students to attend and present at the conference. The Ron McDowell Bursary scheme is available to PhD, MSc and BSc students and will comprise an amount towards costs of travel, accommodation plus a waiver of the conference and workshop fees.

### CONVENERS

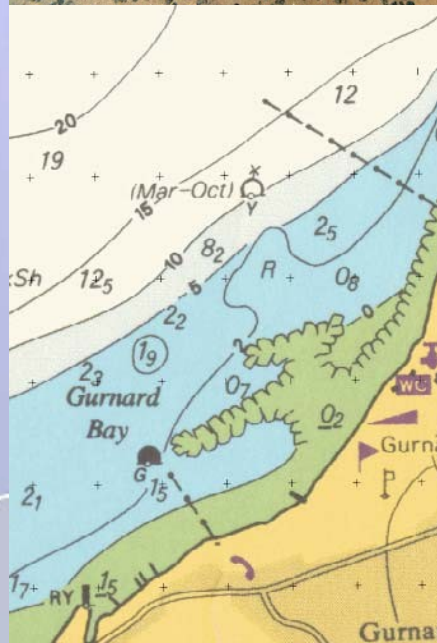
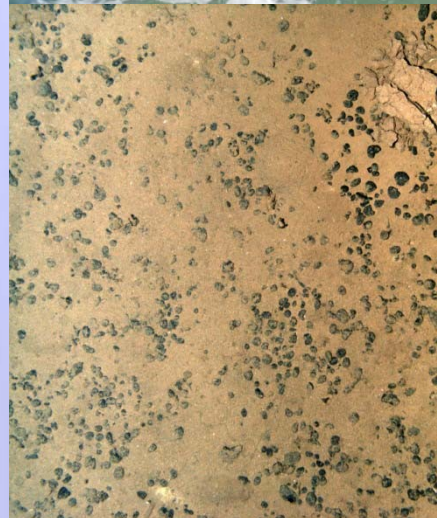
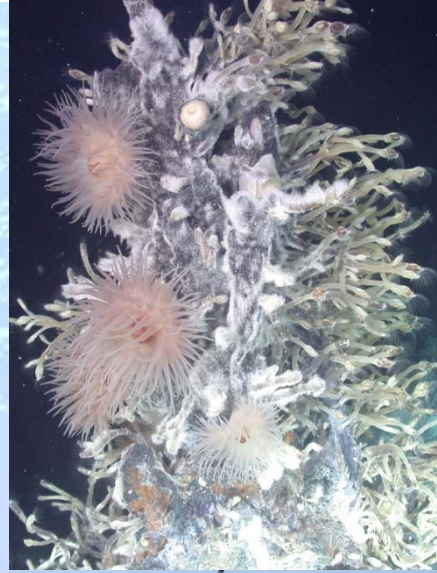
Tim Le Bas (National Oceanography Centre, UK)  
Markus Diesing (Centre for Environment, Fisheries & Aquaculture Science., UK)  
Heather Stewart (British Geological Survey, UK)  
Kerry Howell (University of Plymouth)

### LOCAL ORGANISING COMMITTEE

Veerle Huvene (National Oceanography Centre, UK)  
Claudio Lo Iacono (National Oceanography Centre, UK)  
Katleen Robert (National Oceanography Centre, UK)  
Leigh Marsh (University of Southampton, UK)  
Ian Folger (National Oceanography Centre, UK)

### INTERNATIONAL SCIENTIFIC COMMITTEE

Vaughn Barry (Geological Survey of Canada, Canada)  
Alex Bastos (Federal University of Espírito Santo, Brazil)  
Craig Brown (Nova Scotia Community College, Canada) GEOHAB 2017 chair  
Guy Cochrane (U.S. Geological Survey, USA)  
Markus Diesing (Centre for Environment, Fisheries & Aquaculture Science., UK)  
Margaret Dolan (Geological Survey of Norway, Norway)  
Andrea Fiorentino (Geological Survey of Italy-ISPRA, Italy)  
Gary Greene (Moss Landing Marine Laboratories, USA)  
Anthony Grehan (National University of Ireland, Ireland)  
Peter Harris (Geoscience Australia, Australia)  
Daniel Ierodiaconou (Deakin University, Australia)  
Aarno Kotilainen (Geological Survey of Finland, Finland)  
Geoffroy Lamarche (NIWA, New Zealand)  
Tim Le Bas (National Oceanography Centre, UK)  
Vanessa Lucieer (University of Tasmania, Australia)  
Scott Nichol (Geoscience Australia, Australia)  
Alan Stevenson (British Geological Survey, UK)  
Terje Thorsnes (Geological Survey of Norway, Norway)  
Brian Todd (Geological Survey of Canada, Canada)





# National Oceanography Centre

NATURAL ENVIRONMENT RESEARCH COUNCIL



# British Geological Survey

NATURAL ENVIRONMENT RESEARCH COUNCIL



# Cefas

